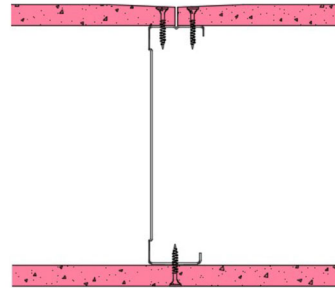


## 146-B-55 - SPEEDLINE System Data Sheet - Version V1 (24-10-23)

SPEEDLINE 146mm 'C' Stud Partition @600mm  
Ctrs, with BG Gyproc 12.5mm FireLine each side



### System Performance Breakdown

Fire Resistance:

BS476 Part 22:1987:

Test Ref & Date or Applied Ref & Report:

Max Height:

Thickness:

Duty Grade: BS 5234: Part 2:1992:

Sound Insulation:

**30/30 Minutes** (Integrity/Insulation).

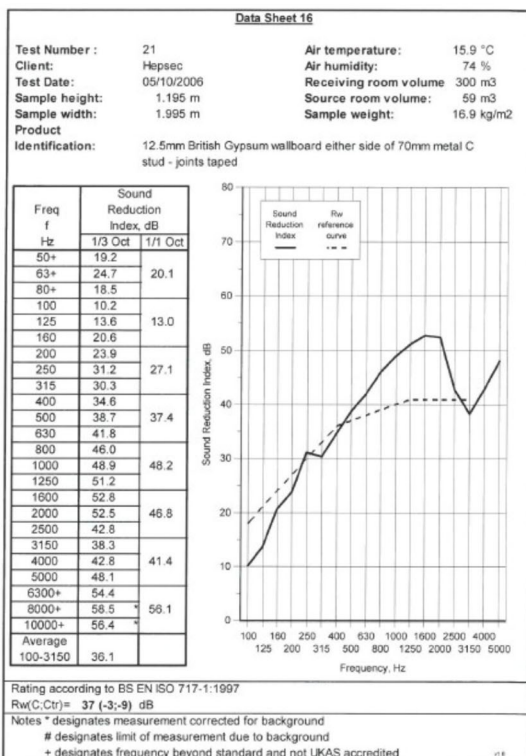
**BTC 17439F - BRE Report P102396-1011A**

**Refer to Speedline Specification Clause**

**173 mm.** (At Base Track, Excluding Finishes)

**Medium - Annexes A-F**

**37 R<sub>w</sub>dB**, Date Tested or Assessed Against - 70-B-51



TESTED AT ONE OF THE UKAS  
ACCREDITED LABORATORIES  
BELOW

B.T.C (H-Ref on Graph)	
B.R.E	
AIRO	
S.R.L	